

HSK-T 63

ISO 12164-3

EXTERNAL TURNING TOOL



MTEN



MTJN



MVLN



MCMN

EXTERNAL TURNING TOOL HOLDER



SF



SV



SN



SB



S

HSK-T

REFERENCE DETAILS

ISO 12164-3

Shank body standard: **ISO-12164-3:20008**

Taper tolerance < **AT3**

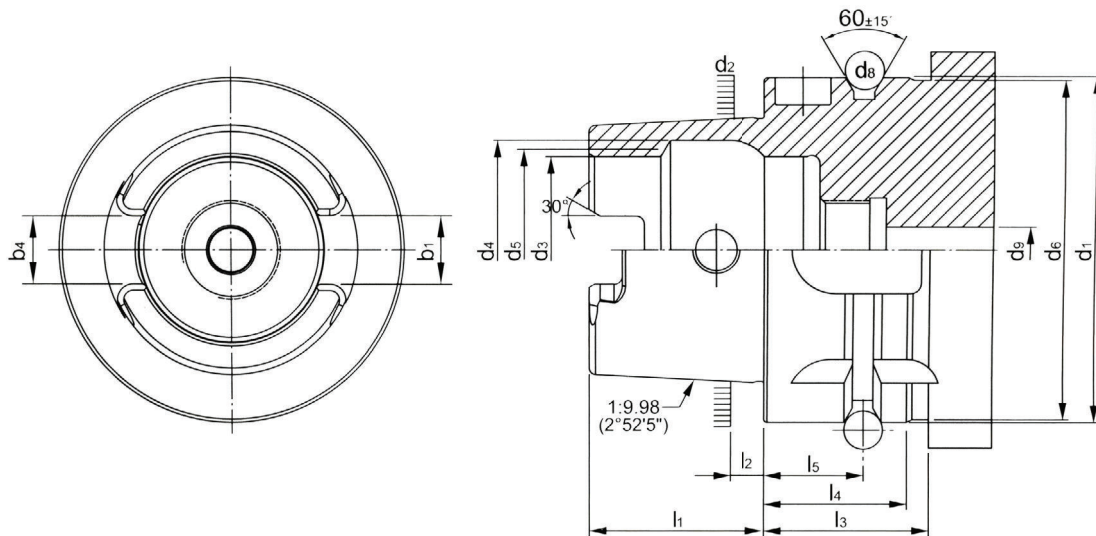
Hardness > **HRC 56°**

Roundness < **0.8 pm**

Surface roughness: **Ra < 0.25 pm**

Carbon depth > **0.8mm**

The shank has pre-balance at G6.3, and can provide precision balance at G2.5. It can be ordered by request.



FORM T

HSK	d h10	d2	d3 H10	d4 H11	d5	d6 max.	d8	d9 max.
32	32	24.007	17	20.5	19	31	4	4.2
40	40	30.007	21	25.5	23	39	4	5
50	50	38.009	26	32	29	49	7	6.8
63	63	48.010	34	40	37	62	7	8.4
80	80	60.012	42	50	46	79	7	10.2
100	100	75.013	53	63	58	99	7	12
HSK	l1 0 -0.2	l2	l3 min.	l4 0 -0.1	l5 ± 0.1	b1 +0.04 -0.04	b4	
32	16	3.2	23	20	16	7.05	6.932	+0.03 0
40	20	4	23	20	16	8.05	7.932	+0.03 0
50	25	5	30	26	18	10.54	10.425	+0.035 0
63	32	6.3	30	26	18	12.54	12.425	+0.035 0
80	40	8	30	26	18	16.04	15.93	+0.035 0
100	50	10	34	29	20	20.02	19.91	+0.035 0

CLAMP MECHANISM			
A	Back clamp system	M	Multi-clamp system
C	Clamp-on system	P	Pin lock system
D	Double clamp system	S	Screw-on system
E	Off-set pin system	T	Taper lock system
JS	Screw-on system	W	Wedge-on system
JT	Back clamp system		

INSERT CLEARANCE	
A	3°
B	5°
C	7°
D	15°
E	20°
F	25°
G	30°
N	0°
P	11°

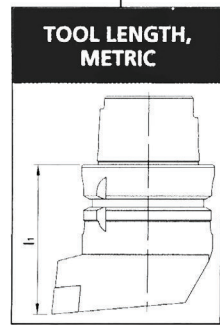
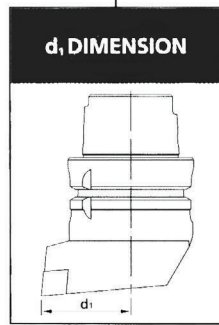
INSERT EDGE LENGTH					
Insert inscribed circle	6.35	7.94	9.525	12.00	12.70
80°	06	08	09	-	12
55°	07	-	11	-	15
35°	11	-	16	-	-
	-	-	-	12	-
	11	13	16	-	22
	-	-	09	-	12

HSK - T63 - M C L N R - 45 065 - 12

INSERT GEOMETRY		
C		80°
D		55°
K		55°
R		
S		
T		
V		35°
W		80°
L		
H		120°
A		85°
B		82°
E		75°
M		86°
O		135°
P		108°

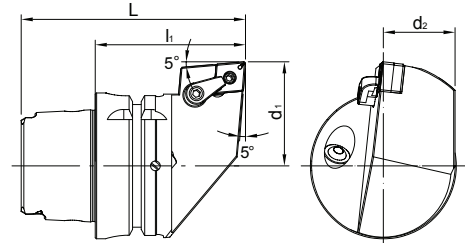
CUTTING EDGE GEMOETRY			
A - 90°		M - 50°	
B - 75°		N - 63°	
C - 90°		P - 117.5°	
D - 45°		R - 75°	
E - 60°		S - 45°	
F - 90°		T - 60°	
G - 90°		U - 93°	
H - 107.5°		V - 72.5°	
J - 93°		W - 60°	
K - 75°		Y - 85°	
L - 95°			

HEAD
R
L
N



MCLN EXTERNAL TURNING TOOL

MCLN



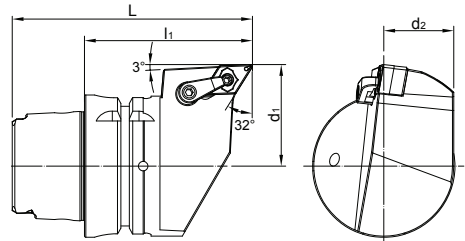
MODEL NO.	TYPE	L	l1	d1	d2	Insert	WEIGHT (KGS)
T63MCLNR4506512	HSK-T63-MCLNR-45065-12	97	65	45	31	CN..1204	1.26
T63MLCNL4506512	HSK-T63-MLCNL-45065-12	97	65	45	31	CN..1204	1.26

Accessory

Clamp	Shim	Screw	Screw I
CL0205	SH0CM	SR0635	SR0465

MDJN EXTERNAL TURNING TOOL

MDJN



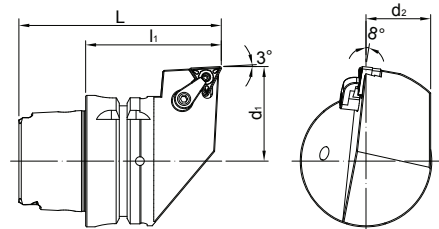
MODEL NO.	TYPE	L	l1	d1	d2	Insert	WEIGHT (KGS)
T63MDJNR4507515	HSK-T63-MDJNR-45075-15	97	65	45	31	CN..1204	1.26
T63MDJNL4507515	HSK-T63-MDJNL-45075-15	97	65	45	31	CN..1204	1.26

Accessory

Clamp	Shim	Screw	Screw I
CL0215	SH0DM	SR0635	SR0465

MTJN EXTERNAL TURNING TOOL

MTJN



MODEL NO.	TYPE	L	l1	d1	d2	Insert	WEIGHT (KGS)
T63MTJNR4506516	HSK-T63-MTJNR-45065-16	97	65	45	31	TN..1604	1.22
T63MTJNL4506516	HSK-T63-MTJNL-45065-16	97	65	45	31	TN..1604	1.22

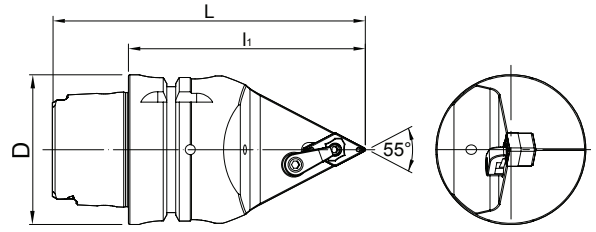
Accessory

Clamp	Shim	Screw	Screw I
CL0205	SH0TM	SR0635	SR0345

* HSK-T 100 are available on demand

MDNN EXTERNAL TURNING TOOL

MDNN



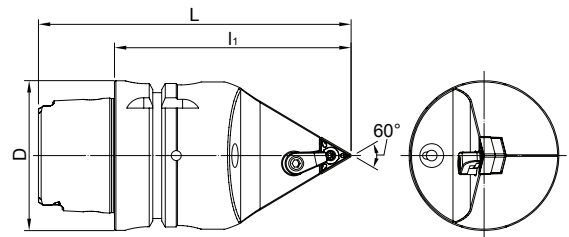
MODEL NO.	TYPE	L	l1	d1	d2	Insert	WEIGHT (KGS)
T63MDNNN0010015	HSK-T63-MDNNN-00100-15	132	100	63	DN..1504	1.55	1.26
T63MDNNN0014015	HSK-T63-MDNNN-00140-15	172	140	63	DN..1504	1.55	1.26

Accessory

Clamp	Shim	Screw	Screw I
CL0215	DMS432	MS625	SR0465

MTEN EXTERNAL TURNING TOOL

MTEN



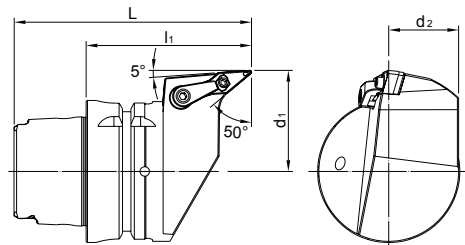
MODEL NO.	TYPE	L	l1	D	Insert	WEIGHT (KGS)
T63MTENN0010016	HSK-T63-MTENN-00100-16	132	100	63	TN..1604	1.62
T63MTENN0014016	HSK-T63-MTENN-00140-16	172	140	63	TN..1604	1.62

Accessory

Clamp	Shim	Screw	Screw I
CL0215	DMS432	MS625	SR0465

MVLN EXTERNAL TURNING TOOL

MVLN



MODEL NO.	TYPE	L	l1	d1	d2	Insert	WEIGHT (KGS)
T63MVLNR4507516	HSK-T63-MVLNR-45075-16	107	75	45	31	VN..1604	1.30
T63MVLNL4507516	HSK-T63-MVLNL-45075-16	107	75	45	31	VN..1604	1.30

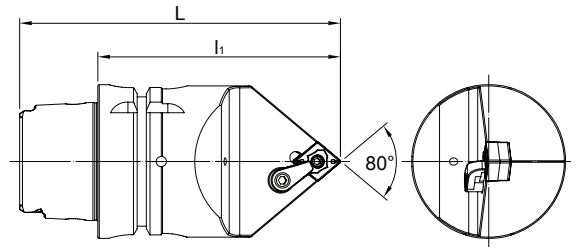
Accessory

Clamp	Shim	Screw	Screw I
CL0215	SH0VM	SR0635	SR0345

* HSK-T 100 are available on demand

MCMN EXTERNAL TURNING TOOL

MCMN



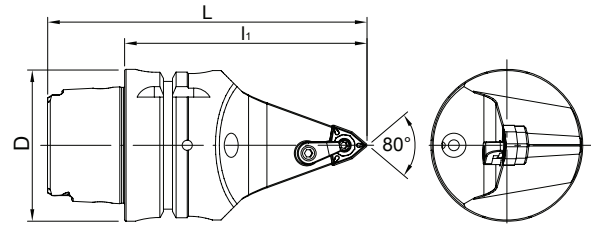
MODEL NO.	TYPE	L	h	Insert	WEIGHT (KGS)
T63MCMNN0010012	HSK-T63-MCMNN-00100-12	132	100	CN..1204	1.68
T63MCMNN0014012	HSK-T63-MCMNN-00140-12	172	140	CN..1204	1.68

Accessory

Clamp	Shim	Screw	Screw I
CL0215	SH0CM	MS620	SR0465

MWMN EXTERNAL TURNING TOOL

MWMN



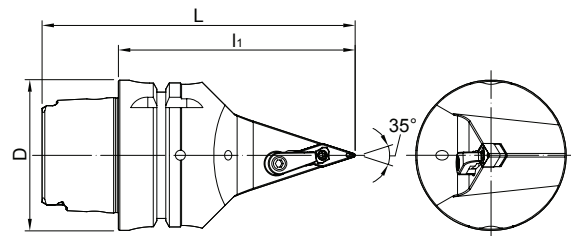
MODEL NO.	TYPE	L	h	D	Insert	WEIGHT (KGS)
T63MWMNN0010008	HSK-T63-MWMNN-00100-08	132	100	63	WN..0804	1.48
T63MWMNN0014008	HSK-T63-MWMNN-00140-08	172	140	63	WN..0804	1.48

Accessory

Clamp	Shim	Screw	Screw I
CL0205	SH0VM	SR0635	SR0465

MVVN EXTERNAL TURNING TOOL

MVVN



MODEL NO.	TYPE	L	h	D	Insert	WEIGHT (KGS)
T63MVVNN0010016	HSK-T63-MVVNN-00100-16	132	100	63	VN..1604	1.40
T63MVVNN0014016	HSK-T63-MVVNN-00140-16	172	140	63	VN..1604	1.40

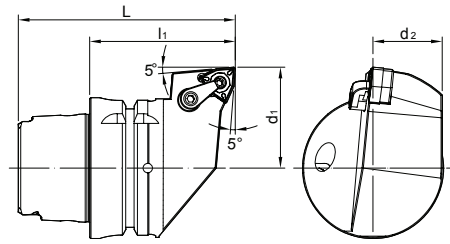
Accessory

Clamp	Shim	Screw	Screw I
CL0215	SH0VM	SR0635	SR0345

* HSK-T 100 are available on demand

MWLN EXTERNAL TURNING TOOL

MWLN



MODEL NO.	TYPE	L	h	d1	d2	Insert	WEIGHT (KGS)
T63MWLNR4506508	HSK-T63-MWLNR-45065-08	97	65	45	31	WN..0804	1.22
T63MWLNL4506508	HSK-T63-MWLNL-45065-08	97	65	45	31	WN..0804	1.22

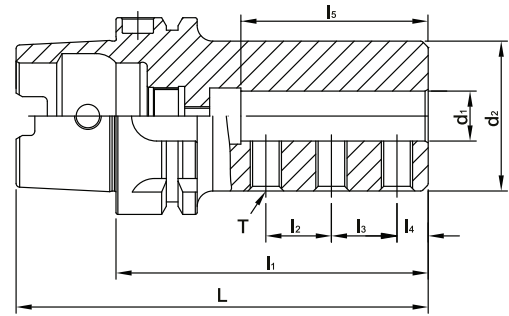
Accessory

Clamp	Shim	Screw	Screw I
CL020S	SH0WM	SR063S	SR046S

* HSK-T 100 are available on demand

SIDE LOCK HOLDER

SLT

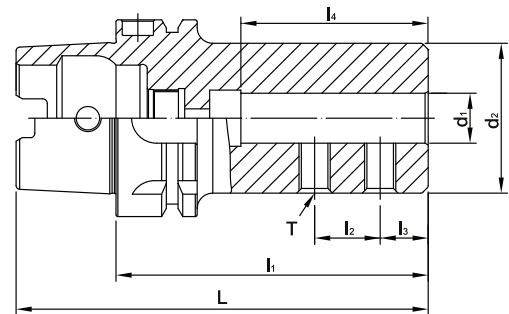


MODEL NO.	TYPE	L	l1	l2	l3	l4	l5	d1	d2	T	WEIGHT (KGS)
T63SLT870	HSK-T63xSLT8-70	102	70	10	10	6	32	8	28	M6	0.93
T63SLT1080	HSK-T63xSLT10-80	112	80	12	12	8	40	10	35	M8	1.10
T63SLT1290	HSK-T63xSLT12-90	122	90	16	16	8	45	12	42	M8	1.36
T63SLT16100	HSK-T63xSLT16-100	132	100	21	21	10	60	16	48	M10	1.60
T63SLT20120	HSK-T63xSLT20-120	152	120	20	20	12	60	20	52	M10	2.03
T63SLT25140	HSK-T63xSLT25-140	172	140	23	23	14	67	25	56	M12	2.52
T63SLT32160	HSK-T63xSLT32-160	192	160	26	26	16	74	32	64	M12	3.34

Use screws to change the coolant outlet from tool coolant hole or from tool holder

	MODEL NO.	TYPE
<p>Screw for coolantoutlet from tool</p>	SC0M4x0.7	SLT8
	SC0M5x0.8	SLT10
	SC0M6x1.0	SLT12, SLT16, SLT20
	SC0M8x1.25	SLT25, SLT32
<p>Screw for coolantoutlet from tool holder</p>	SC0S568	M6x1.0P

SLD

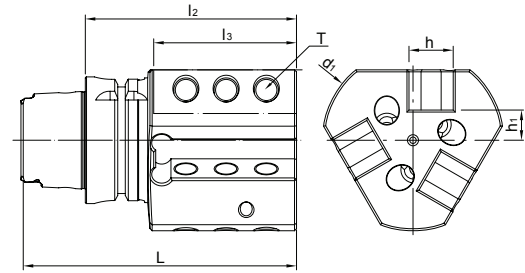


MODEL NO.	TYPE	L	l1	l2	l3	l4	d1	d2	T	WEIGHT (KGS)
T63SLD865	HSK-T63xSLD8-65	97	65	18	10	34	8	28	M8	0.84
T63SLD1070	HSK-T63xSLD10-70	102	70	20	12	39	10	35	M8	0.97
T63SLD1270	HSK-T63xSLD12-70	102	70	20	12	39	12	42	M8	1.10
T63SLD1675	HSK-T63xSLD16-75	107	75	20	15	44	16	48	M10	1.26
T63SLD2075	HSK-T63xSLD20-75	107	75	20	15	44	20	52	M10	1.34
T63SLD2585	HSK-T63xSLD25-85	117	85	23	17	52	25	62	M12	2.79
T63SLD3290	HSK-T63xSLD32-90	122	90	27	17	56	32	62	M12	1.74
T63SLD40100	HSK-T63xSLD40-100	132	100	28	22	62	40	68	M16	2.00

* HSK-T 100 are available on demand

EXTERNAL TURNING TOOL HOLDER

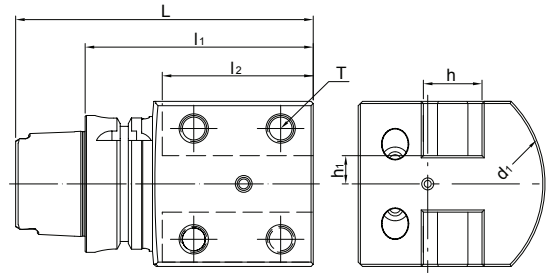
SV



MODEL NO.	TYPE	L	l2	l3	d1	h	h1	T	WEIGHT (KGS)
T63SV20R105	HSK-T63xSV20R-105	137	105	70	90	22	15	M12 x 1.75P	2.72
T63SV20L105	HSK-T63xSV20L-105	137	105	70	90	22	15	M12 x 1.75P	2.72

EXTERNAL TURNING TOOL HOLDER

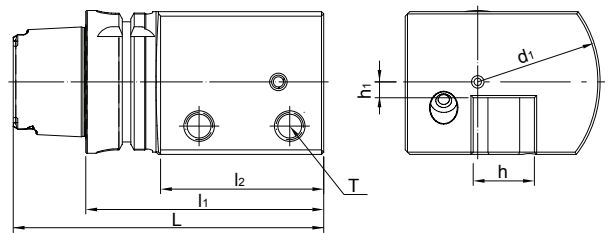
SB



MODEL NO.	TYPE	L	l1	l2	h	h1	d1	T	WEIGHT (KGS)
T63SB20R105	HSK-T63xSB20R-105	137	105	70	25	13	54	M12 x 1.75P	2.98

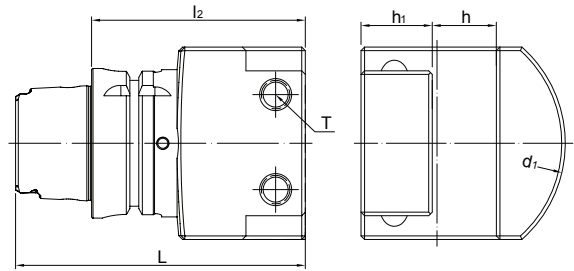
EXTERNAL TURNING TOOL HOLDER

S

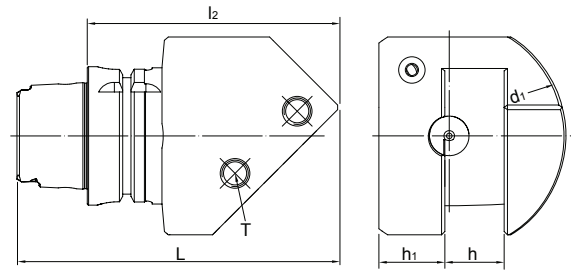


MODEL NO.	TYPE	L	l1	l2	d1	h	h1	T	WEIGHT (KGS)
T63S25R105	HSK-T63xS25R-105	137	105	70	54	27	6	M12 x 1.75P	3.40
T63S25L105	HSK-T63xS25L-105	137	105	70	54	27	6	M12 x 1.75P	3.40

* HSK-T 100 are available on demand

**EXTERNAL TURNING TOOL
HOLDER**
SF


MODEL NO.	TYPE	L	l2	h	h1	d1	T	WEIGHT (KGS)
T63SF2590	HSK-T63xSF25-90	122	90	27	30	54	M12 x 1.75P	3.05
T63SF25120	HSK-T63xSF25-120	152	120	27	30	54	M12 x 1.75P	3.99

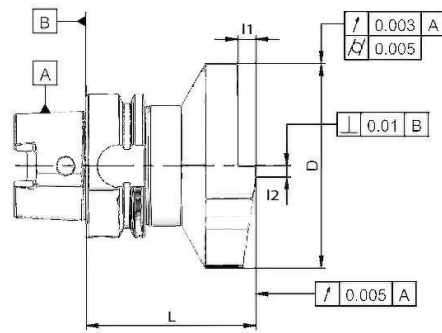
**EXTERNAL TURNING TOOL
HOLDER**
SN


MODEL NO.	TYPE	L	l2	d1	h	h1	T	WEIGHT (KGS)
T63SN25R115	HSK-T63xSN25R-115	147	115	53	27	30	M12 x 1.75P	3.40
T63SN25L115	HSK-T63xSN25L-115	147	115	53	27	30	M12 x 1.75P	3.40

* HSK-T 100 are available on demand

SETTING-HOLDER

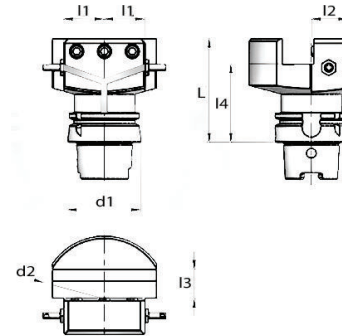
SETT



MODEL NO.	TYPE	L	D	I1	I2
T63SETT9075	HSK-T63xSETT-75	75	90	8	5

TOOLHOLDER RADIAL

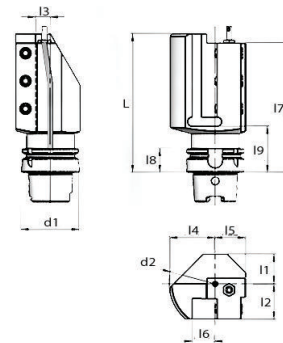
RD



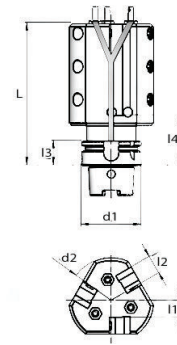
MODEL NO.	TYPE	d1	d2	I1	I2	I3	I4	L
T63RD2575	HSK-T63xRD-90	63	108	35	31,5	25	68	90

TOOLHOLDER AXIAL

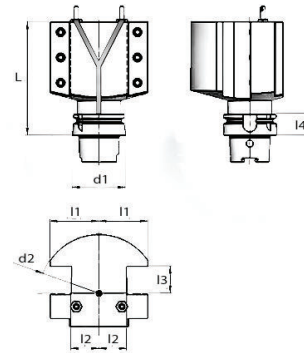
AX



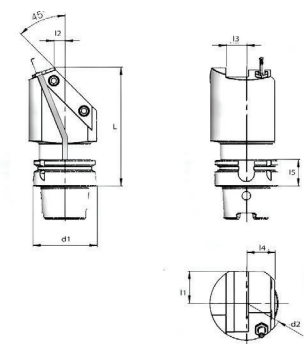
MODEL NO.	TYPE	d1	d2	I1	I2	I3	I4	I5	I6	L	I7	I8	I9
T63AX150R	HSK-T63xAX-150R	63	100	32	38	16	45	33	25	150	140	26	50
T63AX150L	HSK-T63xAX-150L	63	100	32	38	16	45	33	25	150	140	26	50

TRIPLEX TOOLHOLDER AXIAL
TRX


MODEL NO.	TYPE	d1	d2	l1	l2	L	l3	l4
T63TRX150R	HSK-T63xTRX-150R	63	90	18	20	150	26	53
T63TRX150L	HSK-T63xTRX-150L	63	90	18	20	150	26	53

DUPLEX TOOLHOLDER AXIAL
DUX


MODEL NO.	TYPE	d1	d2	l1	l2	l3	L	l4
T63DUX135	HSK-T63xDUX-135	63	140	58	33	32	135	26

TOOLHOLDER 45°
AN45°


MODEL NO.	TYPE	d1	d2	l1	l2	l3	l4	L	l5
T63AN45117R	HSK-T63xAN45-117R	63	72	31,5	11	20	28	117	26
T63AN45117L	HSK-T63xAN45-117L	63	72	31,5	11	20	28	117	26